



2025

HONOR AWARDS



THE NATIONAL
TERRAZZO
& MOSAIC ASSOCIATION

Fort Lauderdale International Airport

Fort Lauderdale, FL

Judges Choice - Art *A Journey*

This art installation, *A Journey*, merges artisanal craftsmanship with the creative vision of a mixed-media artist new to terrazzo. Departing from tradition, this innovative project forgoes divider strips for temporary foam rubber to separate colors during the pour. Collaborating on-site, the artist and terrazzo artisans hand-mixed over 100 custom colors from 12 base formulas, pouring each flower individually with blended hues and freeform patterns and expanding the medium's expressive range. Commissioned for a high-traffic walkway in Terminal 1 through the Broward County Public Art & Design Program, its intricately layered imagery evokes an impressionistic carpet infused with color and movement.



Architect

Justin Architects, P.A.
Fort Lauderdale, FL

Designer/Artist

Marielle Plaisir
Miami, FL

Terrazzo Contractor

Creative Terrazzo Systems
Southwest Ranches, FL

General Contractor

LEE Construction Group
Doral, FL

Owner

Broward County Florida
Fort Lauderdale, FL

Resin Supplier

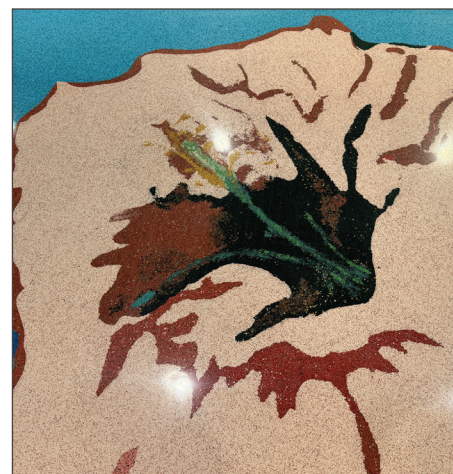
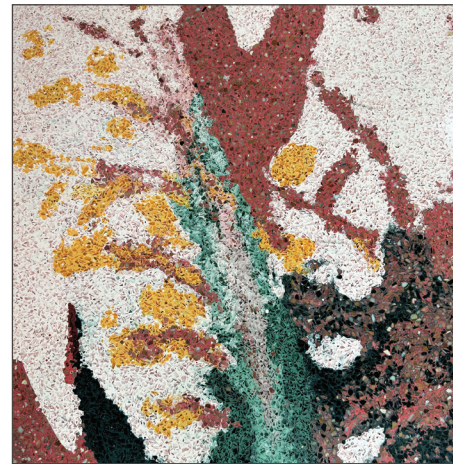
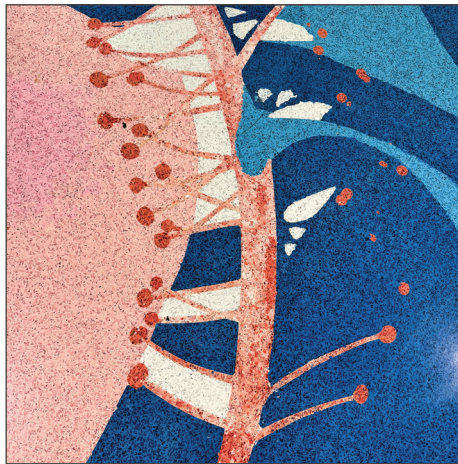
Sherwin Williams Company

Aggregate Supplier

Arim, Inc.

Photographer

Christina E. Roldan





Hollywood Hills Residence

Hollywood Hills, CA

The remodel of this luxurious residence enhances its structural sophistication while referencing the neighborhood's midcentury vibe. An exceptional monolithic cement terrazzo system unifies floors, stairs, walls, floating sinks, and benches. This monochromatic poured-in-place terrazzo, enriched with Venetian aggregate, establishes a polished aesthetic and spatial flow. It reinforces a fluid transition between indoors and outdoors while perfectly accompanying a marble cobblestone wall. Outdoors, terrazzo steppingstones, a patio, and a jacuzzi with a cascading waterfall extend the home's connection to its surroundings, completing its sumptuous celebration of California living.

Architect

Jennifer F. Yano
Los Angeles, CA

Terrazzo Contractor

Over the Top Terrazzo & Tile
El Monte, CA

General Contractor

Dunbar Builders
Thousand Oaks, CA

Owner

Helaina Properties LLC
Los Angeles, CA

Aggregate Supplier

Terrazzo & Marble Supply Companies

Divider Strips/Artistic Designs

Manhattan American Terrazzo Strip Co.

Photographer

Marco Munoz



Winthrop Center

Boston, MA

Certified as the world's largest Passive House office building, this luminous interior exemplifies energy efficiency and sustainability. The terrazzo materials and execution heighten a sense of permanence while offering a sophisticated solution for multifunctional high-traffic areas. A triangular floor pattern incorporates nearly 2.5 miles of zinc double divider strips, precisely mitered to form complex intersections. The hallmarks of this installation are precast cement terrazzo benches - sculptural elements with wood accents, lighting, and electrical access panels. Seating steps with wood panels and stainless-steel abrasive strips contribute to a quiet drama and restrained warmth.

Architect

Handel Architects, LLP
New York, NY

Terrazzo Contractor

DePaoli Mosaic Company
Canton, MA

General Contractor

Suffolk Construction
Boston, MA

Owner

Millennium Partners
Boston, MA

Resin Supplier

Key Resin Company

Aggregate Supplier

Terrazzo & Marble Supply Companies

Precast Products/Artistic Designs

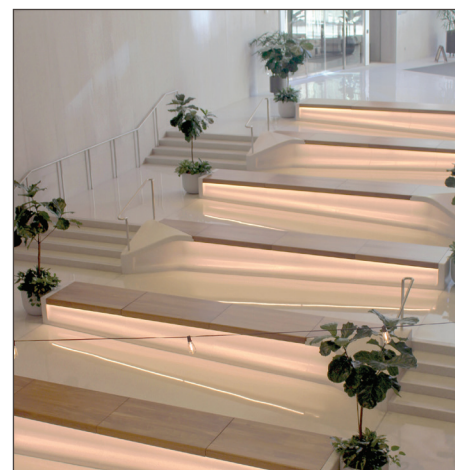
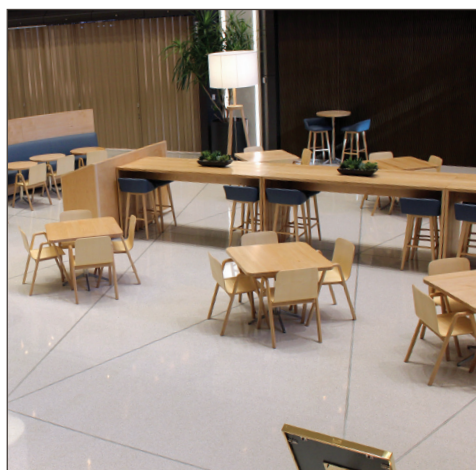
Wausau Tile

Divider Strips/Artistic Designs

Manhattan American Terrazzo Strip Co.

Photographer

Leslie Carrio





St. Joan of Arc Church

Lisle, IL

This transformative renovation, a study in restraint and tasteful intentionality, is designed to revitalize the church's interior. A neutral terrazzo field is enriched by an elegant religious crest, flowing ribbons, and golden steps that mark the transition to the sanctuary. The 150-foot-long terrazzo steps and baptismal font were poured-in-place and precisely hand-ground. These elements - both evocative and ornamental - define key functional spaces while accentuating the masterfully composed contemporary interior. This project also provided an opportunity for experienced terrazzo artisans to share the traditions of the craft with the next generation.

Architect

Douglas Lasch
LaGrange, IL

Terrazzo Contractor

Amici Terrazzo
Elk Grove Village, IL

General Contractor

Fredrick Quinn Corporation
Addison, IL

Owner

St. Joan of Arc Church
Lisle, IL

Resin Supplier

Terrazzo & Marble Supply Companies

Aggregate Supplier

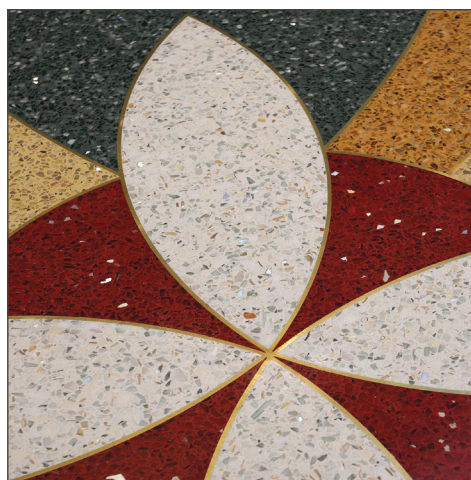
Terrazzo & Marble Supply Companies

Divider Strips/Artistic Designs

National Metal Shapes

Photographer

Viken Djaferian, FotoGrafix



C.D. Peacock

Oak Brook, IL

Holding the distinction of being Chicago's first registered enterprise in 1837, this jewelry retailer has undergone a lavish renovation at its Oak Brook location, built in 1962. The update honors this legacy while embracing modern sophistication and sumptuous detailing. A glossy black epoxy terrazzo floor provides a refined canvas for fine jewelry and timepieces. This hand-crafted installation heightens the shopping experience, merging heritage with contemporary luxury and lending a sense of permanence in materials and execution. Flowing brass inlays up to an inch wide are a dramatic flourish inspired by the iconic peacock logo and reinforce the brand identity with cadence and artistry.

Architect

Stucky Vitale Architects
Royal Oak, MI

Designer/Artist

JGA Branded Environments
Southfield, MI

Terrazzo Contractor

Menconi Terrazzo
Bensenville, IL

General Contractor

DSI Development Solutions
Chicago, IL

Owner

Oak Brook Urban Venture
Chicago, IL

Resin Supplier

Key Resin Company

Aggregate Supplier

Terrazzo & Marble Supply Companies

Divider Strips/Artistic Designs

Creative Edge

Photographers

Clayton Menconi
Joe Adolfo





Hilton Buena Park

Anaheim

Buena Park, CA

The stylish retro interior of this hotel, built in the 1970s, captures the openness and natural light that defined the era. Exuberantly reinvented details, large and small, and the random sweeping curves and oversized circular forms respond masterfully to the consistent visual theme. The alignment of the elaborate patterns with the architecture conveys an intelligent narrative punctuated by monolithic benches with half-moon details in precast terrazzo. All other terrazzo components were poured-in-place, including wall base elements joined by a prefabricated covered strip. The result is captivating, multi-faceted, and tastefully assertive.

Architect

DKY Architects
Irvine, CA

Terrazzo Contractor

Over the Top Terrazzo & Tile
El Monte, CA

General Contractor

Carine, Inc.
Los Alamitos, CA

Owner

M + D Properties
Buena Park, CA

Resin Supplier

Terrazzo & Marble Supply Companies

Aggregate Supplier

Terrazzo & Marble Supply Companies

Divider Strips/Artistic Designs

Manhattan American Terrazzo Strip Co.

Photographer

Marco Munoz



Missouri Botanical Garden

St. Louis, MO

Jack C. Taylor Visitor Center

This splendid terrazzo installation evokes the movement of a woodland creek, incorporating over 800 embedded brass leaves and hand-cut river rocks that produce a tactile experience. With 20 species of native leaves and No. 3-5 stone aggregates, the design meanders organically through the space. The layout of individually sliced 3/8-inch-thick river stones was exactly developed in CAD, then set by hand and modified on-site. Terrazzo extends through the lobby, gift shop, and restrooms; the visitor center is further enriched by nature-inspired elements – firefly-like pendant lighting, and repurposed tree trunk seating – creating a serene, immersive setting.



Architect

Ayers Saint Gross
Tempe, AZ

Terrazzo Contractor

Missouri Terrazzo
St. Louis, MO

General Contractor

Alberici Corporation
St. Louis, MO

Owner

Missouri Botanical Garden Association
St. Louis, MO

Resin Supplier

Terrazzo & Marble Supply Companies

Aggregate Supplier

Terrazzo & Marble Supply Companies

Divider Strips/Artistic Designs

Manhattan American Terrazzo Strip Co.
National Metal Shapes

Photographer

Viken Djaferian, FotoGrafix





City Center Bridge Connectors

Las Vegas, NV

This terrazzo installation embodies the spirit of Las Vegas, where luxury and assertive design converge. Terrazzo creates visual continuity across pedestrian bridges, connecting three casinos and replacing outdated tile. The gleaming terrazzo finish is a functional and artistic centerpiece. Terrazzo medallions anchor the design, with smooth, well-executed curves flowing through the walkways. Glass aggregate brings sparkle and saturated color, while intricate patterns in zinc divider strips uphold the high-end aesthetic, and color-matched terrazzo joints blend seamlessly into the surface. The dramatic, carpet-style pathway reflects the city's energy, showcasing the durability and longevity of terrazzo.

Architect

George M. Rogers, Architect
Las Vegas, NV

Terrazzo Contractor

CORRADINI Corp.
Costa Mesa, CA

General Contractor

Carma Group LLC
Las Vegas, NV

Owner

MGM Resorts Design & Development
Las Vegas, NV

Resin Supplier

Terrazzo & Marble Supply Companies

Aggregate Suppliers

Terrazzo & Marble Supply Companies
Southern Aggregates

Divider Strips/Artistic Designs

Manhattan American Terrazzo Strip Co.

Photographer

David Laudadio





2025 NTMA Job of the Year - Orlando International Airport

Orlando, FL

The newly expanded terminal at Orlando International Airport showcases a refined design concept and flawless craftsmanship, creating an immersive experience that links the built environment with the region's unique landscape. It has the distinction of being the first airport campus worldwide to achieve LEED v4 certification. The terminal incorporates 650,000 square feet of epoxy terrazzo, bringing beauty and functionality to the space.

Central to the interior is *The Springs*, a custom public artwork that captures Florida's natural springs and waterways in terrazzo. Its clean palette of blues and greens reflects the sub-tropical wetlands, while detailed depictions of palm trees, cypresses, and aquatic life deepen the sense of place. Over 600 fish, crafted in waterjet-cut marble, add layers of movement, dimension, and realism. Precast terrazzo elements, including leaf-patterned tree grates crafted by the contractor, add further cohesion and realism to the design. Inspired by Florida's beaches, the modular terrazzo layout in neutral tones in the terminal further ties the architecture to the region's identity and serves as a memorable introduction to Orlando for millions of travelers each year.

Architects

HNTB Corporation-Architect of Record
Lake Mary, FL

Fentress Architects-Design Architect
Denver, CO

Artist

Vickie Wilson
Raleigh, NC

Terrazzo Contractor

David Allen Company
Raleigh, NC

General Contractor

Hensel Phelps/Turner-Kiewit JV
Orlando, FL

Owner

Greater Orlando Aviation Authority
Orlando, FL

Resin Supplier

Terrazzo & Marble Supply Companies

Aggregate Suppliers

Arim, Inc.
Southern Aggregates
Terrazzo & Marble Supply Companies

Precast Products/Artistic Designs

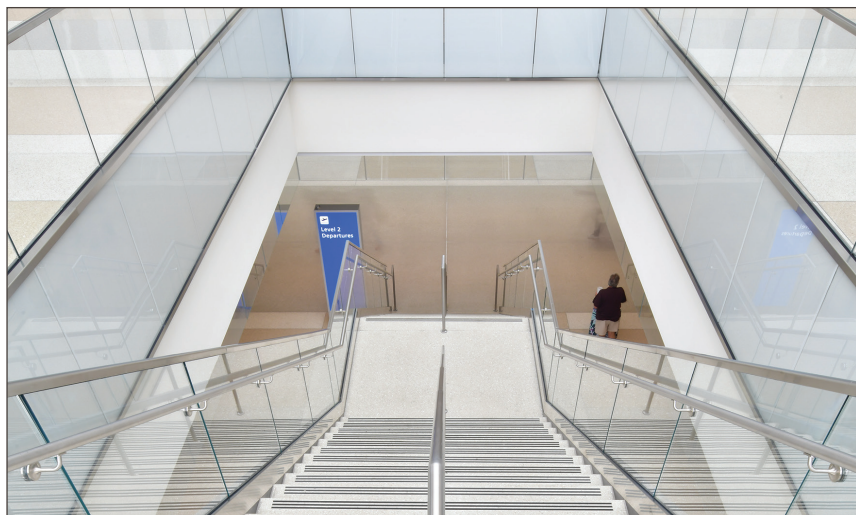
Wausau Tile

Divider Strips/Artistic Designs

National Metal Shapes

Photographer

David Laudadio



Wayne County Criminal Justice Center Detroit, MI

This new complex embodies transparency and dignity, with sunlight playing an energizing role in shaping a welcoming and engaging interior. Nearly 5,000 square feet of hand-crafted terrazzo precast wall panels are a defining feature, providing textured continuity with the floors across all seven stories. The staggered terrazzo floor pattern echoes the texture of the adjacent curtain wall while aligning with architectural elements, including the stone colonnade and monumental staircase. The result is an exceptionally dynamic public building that balances innovation and functionality, serving as a vital civic hub for over 1,000 daily visitors.

Architect

HOK
Chicago, IL

Terrazzo Contractor

Artisan Tile
Brighton, MI

General Contractor

Barton Malow
Southfield, MI

Owner

Rock, formerly known as Rock Ventures
Detroit, MI

Resin Supplier

Terrazzo & Marble Supply Companies

Aggregate Suppliers

Arim, Inc.
Terrazzo & Marble Supply Companies

Precast Products/Artistic Designs

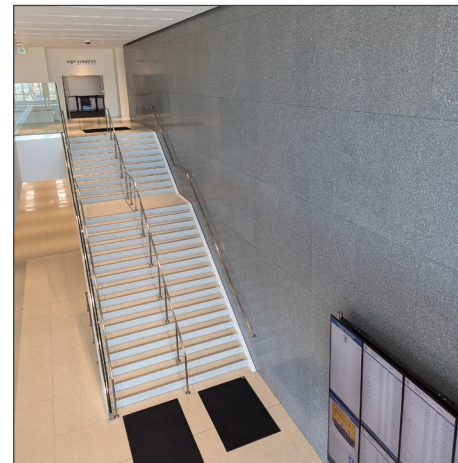
Wausau Tile – Precast Stairs

Divider Strips/Artistic Designs

National Metal Shapes

Photographer

Morgen Panning





Katherine Bernhardt

Residence

St. Louis, MO

This whimsical terrazzo installation transforms a residence into a bold showcase for contemporary art. The St. Louis residence was reimagined with a retro aesthetic inspired by the playful style of the 1980s Memphis Milano movement. The entry foyer features a dynamic three-color pattern of one-foot-diameter circles, while contrasting bands energize the hallway. In the family room, an abstract two-tone design evokes organic cell structures. A single terrazzo color grounds the composition in other spaces, unifying the eclectic interior and complementing a diverse art collection. The whole project is a striking fusion of spirited design and architectural vision.

Designer/Artist

Katherine Bernhardt
St. Louis, MO

Terrazzo Contractor

Missouri Terrazzo
St. Louis, MO

Owner

Katherine Bernhardt
St. Louis, MO

Resin Supplier

Terrazzo & Marble Supply Companies

Aggregate Supplier

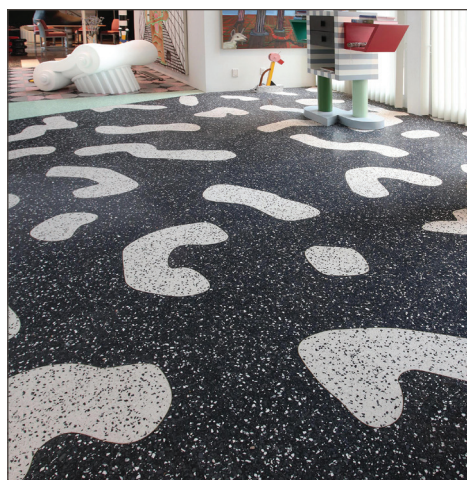
Terrazzo & Marble Supply Companies

Divider Strips/Artistic Designs

Manhattan American Terrazzo Strip Co.

Photographer

Viken Djaferian, FotoGrafix



Grand Junction High School

Grand Junction, CO

Terrazzo is central to this new school facility, unifying high-traffic areas with a sleek, contemporary aesthetic. A soothing, naturalistic palette underscores the connection between indoor spaces and the surrounding landscape. In the main gathering space - awash in natural light - a simple, well-scaled design traces the meeting point of two local rivers, while angular, mountain peak-inspired forms add dynamic energy. Five impeccably crafted precast terrazzo staircases include learning center steps with integrated stadium seating. Thoughtful detailing accentuates the materiality of the design, flowing intuitively with the architecture to create a warm and visually harmonious environment.

Architect

Blythe Group + co.
Grand Junction, CO

Terrazzo Contractor

CORRADINI Corp.
Costa Mesa, CA

General Contractor

FCI Constructors, Inc.
Grand Junction, CO

Owner

Mesa County Valley School District #51
Grand Junction, CO

Resin Supplier

Terrazzo & Marble Supply Companies

Aggregate Supplier

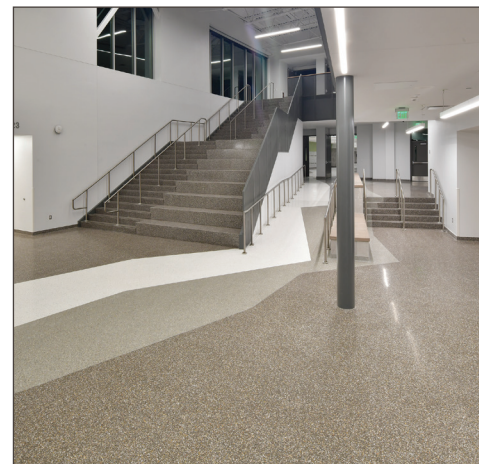
Terrazzo & Marble Supply Companies

Divider Strips/Artistic Designs

Manhattan American Terrazzo Strip Co.

Photographer

David Laudadio





Gerald R. Ford International Airport Grand Rapids, MI

This expansion marks the fifth phase of an epoxy terrazzo installation program in all ticketing and concourse areas, incorporating durability, low maintenance, and design versatility. A five-color rolling wave pattern maintains continuity throughout the airport, guiding travelers through an engaging and easily navigable environment. In this phase, nine waterjet-cut art installations in 54 colors by four local artists have been introduced, adding a rich visual dimension and reflecting the region's distinctive landscapes, from the deep blues of the lake and sandy tans of the dunes to the grays and purples of the urban core.

Architect

Mead & Hunt
Middleton, WI

Artists:

George Eberhaedt III
Kim Nguyen
Maureen Nollette
Michael Pfleghaar

Terrazzo Contractor

Central Tile & Terrazzo Company
Kalamazoo, MI

General Contractor

The Christman Company
Grand Rapids, MI

Owner

Gerald R. Ford International
Airport Authority
Grand Rapids, MI

Resin Supplier

Terrazzo & Marble Supply Companies

Aggregate Supplier

Terrazzo & Marble Supply Companies

Divider Strips/Artistic Designs

Manhattan American Terrazzo Strip Co.

Photographer

Viken Djaferian, FotoGrafix



Malibu Residence

Malibu, CA

After this property was destroyed in the 2018 Woolsey Fire, a dazzlingly designed and expertly executed rebuild honors the resident's minimalistic aesthetic. The terrazzo installation, both interior and exterior, uses a poured-in-place bonded cement system in a rich, consistent color, incorporating tubs, walls, and integrated sinks in a monolithic design. Thoughtful details, such as the seamless connection between the floor and fixtures, and the integration of metal and glass doors, showcase impeccable artistry. This project exemplifies the use of durable, high-quality materials, reflecting the community's shift toward fire-resistant building practices and a proactive approach to fire safety.

Architect

John C. Klope
San Francisco, CA

Terrazzo Contractor

Over the Top Terrazzo & Tile
El Monte, CA

General Contractor

Dumbar Construction
Grand Terrace, CA

Owner

Eric Choi
Los Angeles, CA

Aggregate Supplier

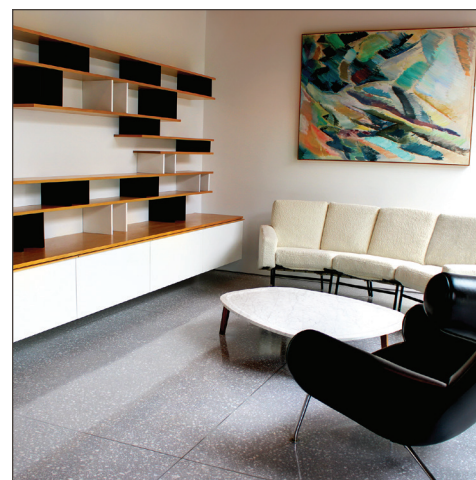
Terrazzo & Marble Supply Companies

Divider Strips/Artistic Designs

Manhattan American Terrazzo Strip Co.

Photographer

Marco Munoz





Dane County Regional Airport Madison, WI

This expansion reflects the region's identity and extends the airport's Prairie Style aesthetic in a vibrant color palette while showcasing terrazzo's versatility in meeting complex design objectives. A striking topographical map in terrazzo serves as a visual destination, identifying local landmarks and depicting local lakes in varying blue terrazzo blends to represent water depths. Mirror aggregate introduces a dynamic ripple effect. Wayfinding graphics, such as black marble paw prints and bold red racetrack patterns, enhance functionality and visual interest. The durable, low-maintenance terrazzo installation exceeded the county's Green Building Policy guidelines, emphasizing sustainable design and long-term performance.

Architect/Designer

Mead and Hunt
Middleton, WI

Terrazzo Contractor

Wisconsin Terrazzo
Holmen, WI

General Contractor

Miron Construction
Neenah, WI

Owner

Dane County Regional Airport
Madison, WI

Resin Supplier

Terrazzo & Marble Supply Companies

Aggregate Supplier

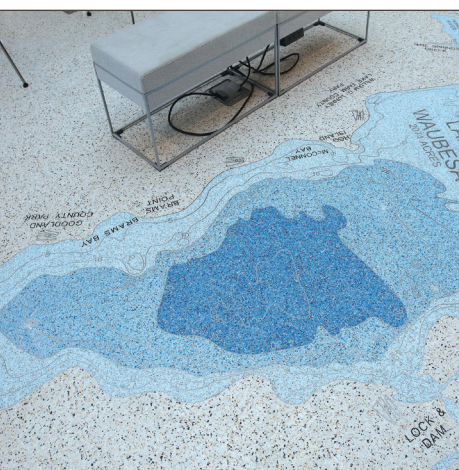
Terrazzo & Marble Supply Companies

Divider Strips/Artistic Designs

Creative Edge
Terrazzo & Marble Supply Companies

Photographer

Viken Djaferian, FotoGrafix



Intuit Dome

Inglewood, CA

This new venue is a landmark in sports architecture, combining traditional terrazzo with cutting-edge technology and sustainability. The LEED Platinum-certified, 100-percent carbon-free venue incorporates 140,000 square feet of epoxy terrazzo across its seven stories, complemented by sand-cushion, polyacrylate, and Venetian Terrazzo systems. Two impressive precast terrazzo staircases connect all seven levels. The triangles in the floor pattern vary in size, curving with the building's elliptical form. Mirroring the basketball-themed roof structure, the floor is visible from multiple floors, so the design on each floor aligns perfectly with the structural elements above.

Architect

AECOM Technical Services, Inc.
Kansas City, MO

Terrazzo Contractor

CORRADINI Corp.
Costa Mesa, CA

General Contractor

AECOM / Turner NBA JV
Los Angeles, CA

Owner

Murphy's Bowl LLC
Inglewood, CA

Resin Suppliers

Terrazzo & Marble Supply Companies
(Epoxy Terrazzo)

Crossfield Products Corp.
(Polyacrylate Terrazzo)

Aggregate Suppliers

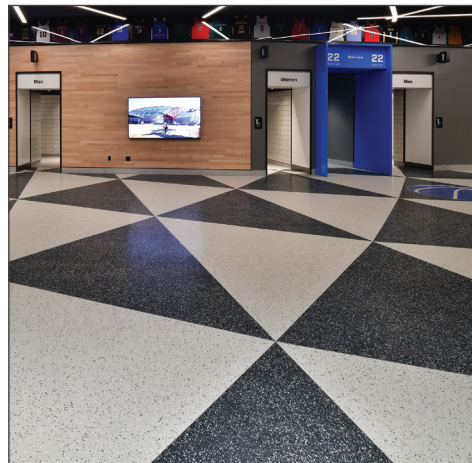
Terrazzo & Marble Supply Companies
Southern Aggregates

Divider Strips/Artistic Designs

National Metal Shapes
Manhattan American Terrazzo Strip Co.

Photographer

David Laudadio





Wilmington International Airport

Wilmington, NC

This terminal expansion showcases terrazzo art installations that embody the region's character, offering travelers a memorable introduction and establishing the airport as a distinctive gateway. The seaside palette adds charm while a terrazzo compass rose and two medallions by local artists - commissioned by The Arts Council of Wilmington & NHC - shape the terminal's identity. A Venus flytrap, native to this region, greets passengers, while a labyrinth, with a baby loggerhead sea turtle in waterjet-cut brass, honors the turtles' journey to the sea. Seashell aggregates embedded in the terrazzo mix further root the design in its coastal setting.

Architect

The Wilson Group
Charlotte, NC

Artists

Venus Flytrap - Paul Hill & Jeff Hackney
Loggerhead Labyrinth - Jill Webb

Terrazzo Contractor

David Allen Company
Raleigh, NC

General Contractor

Monteith Construction Corp.
Wilmington, NC

Owner

New Hanover County Airport Authority
Wilmington, NC

Resin Supplier

Terrazzo & Marble Supply Companies

Aggregate Suppliers

Arim, Inc.
Terrazzo & Marble Supply Companies

Precast Products/Artistic Designs

Precast Terrazzo Enterprises

Divider Strips/Artistic Designs

Manhattan American Terrazzo Strip Co.

Photographer

David Laudadio





THE NATIONAL
TERRAZZO
& MOSAIC ASSOCIATION

www.NTMA.com • 800.323.9736