



# National Terrazzo & Mosaic Association 2015 Honor Awards



*Terrazzo*



## **San Joaquin Community Hospital - MOB (Imaging & Cancer Center) Bakersfield, CA**

The design of this 6,700-square-foot terrazzo installation in nine colors responds well to the architecture of the space, providing a skilled response to the different scales of the entries and the smaller spaces. The soothing harmony of the color palette welcomes visitors with a calming environment. Two adjacent entry lobbies are united by intricate design patterns with large, smooth radius curves. One lobby presents a traditional design aesthetic with brass divider strip and warm colors, while the colors of the second lobby are complemented by zinc divider strip and marble, glass and mirror aggregate. Attention to fine detail is evident throughout.

### **Architect**

**Lionakis**  
Newport Beach, CA

### **Terrazzo Contractor**

**CORRADINI Corp.**  
Fountain Valley, CA

### **General Contractor**

**Swinerton Builders**  
Bakersfield, CA

### **Owner**

**San Joaquin Community Hospital**  
Sacramento, CA

### **Resin Supplier**

**Terrazzo & Marble Supply Companies**

### **Aggregate Supplier**

**Terrazzo & Marble Supply Companies**

### **Divider Strip Supplier**

**National Metal Shapes**

### **Photographer**

**Mike Padgett**





## University of Minnesota, Northrop Auditorium Minneapolis, MN

In this multilevel project, 44,000 square-feet of terrazzo is divided between sand-cushion on lower floors and epoxy terrazzo on the upper. In addition, 10,000 square-feet of 87-year-old sand cushion terrazzo was polished to a like-new finish. For sound insulation, an epoxy undercoat with ground rubber tires was installed on the upper floors. With its six monolithic, muted tones accented by heavy top divider strip, the floor design honors the character of the architecture. The 10 poured-in-place stairways, with numerous curbs, plinths and stairs with polished edges, stringers and six-inch gutters, all hand ground, are meticulously executed.

### Architect, Designer/Artist

Hammel, Green & Abrahamson (HGA), Inc.  
Minneapolis, MN

### Terrazzo Contractor

Advance Terrazzo and Tile Co., Inc.  
Coon Rapids, MN

### General Contractor

JE Dunn  
Eden Prairie, MN

### Owner

University of Minnesota  
Minneapolis, MN

### Resin Supplier

Terrazzo & Marble Supply Companies

### Aggregate Suppliers

Continental Terrazzo Supply  
Southern Aggregates/Justice Products  
Terrazzo & Marble Supply Companies

### Precast Suppliers

Romoco Precast Terrazzo Products  
Wausau Tile

### Divider Strip Supplier

Manhattan American Terrazzo Strip Company

### Photographer

Ben Stoner Photography



## Primary Children's Hospital Salt Lake City, UT

With 15 rich, dense colors mixed with glass, crushed mirror and marble, this project meets the goal of providing a vibrant, playful atmosphere for young patients. The stylized, cheery animals in water-jet-cut zinc are appropriately scaled for the space. All divider strips were placed by hand, for true circles and clean intersections. The 20,000-square-foot installation also includes six flights of precast terrazzo stairs, with landings poured-in-place to meet the precast edge for a nearly invisible seam. The floor was designed to respond to the flow of traffic and to connect the architecture with the furnishings.

### Architect

MHTN Architects  
Salt Lake City, UT

### Designer/Artist

Amber Lake - MHTN Architects  
Salt Lake City, UT

### Terrazzo Contractor

Finn-Wall Specialties  
Midvale, UT

### General Contractor

Jacobsen Construction  
West Valley City, UT

### Owner

Primary Children's Hospital  
Salt Lake City, UT

### Resin Supplier

Terrazzo & Marble Supply Companies

### Aggregate Supplier

Terrazzo & Marble Supply Companies

### Precast Supplier

Precast Terrazzo Enterprises

### Divider Strip Supplier

National Metal Shapes

### Photographer

Daron Fowers





## Citrix Raleigh Headquarters Raleigh, NC

Terrazzo provides a clean, classic backdrop to repurposed shipping containers and recycled brick in this abandoned warehouse turned high tech office space. The simple tone-on-tone design and subtle palette of the floor suit the textures of the space and allows other design elements to shine. For a seamless finish, the only precast terrazzo used was around certain columns. The 5,200 square-foot installation included several long, poured-in-place treads, some on a radius, others straight. Vertical terrazzo was poured-in-place on walls along a ramp and around the large central trench that holds the shipping containers.

**Architect**  
Alliance Architecture  
Durham, NC

**Terrazzo Contractor**  
David Allen Company  
Raleigh, NC

**General Contractor**  
RCI Builders  
Thousand Oaks, CA

**Owner**  
Citrix  
Goleta, CA

**Resin Supplier**  
Terrazzo & Marble Supply Companies

**Aggregate Supplier**  
Terrazzo & Marble Supply Companies

**Divider Strip Supplier**  
National Metal Shapes

**Photographer**  
David Laudadio



# **F.T. Bresnahan Elementary School Newburyport, MA**

Value engineered last minute into this 7,800-square-foot project to replace VCT, this whimsical nautical design in terrazzo is a tribute to the local community's maritime history. The floor, with its charming combination of five colors, is low maintenance and durable. The major challenges of the job were to lay out the larger waves and to tightly intersect prefabricated strip elements - the ship, fish, bird and whale and adjoining waves - with those that were bent on site. The even distribution of glass, mother-of-pearl and marble aggregate represents the many successfully executed details evident in this fine example of terrazzo artistry.

**Architect**  
**HMFH Architects**  
**Cambridge, MA**

**Terrazzo Contractor**  
**DePaoli Mosaic Company**  
**Randolph, MA**

**General Contractor**  
**CTA Construction**  
**Waltham, MA**

**Owner**  
**City of Newburyport**  
**Newburyport, MA**

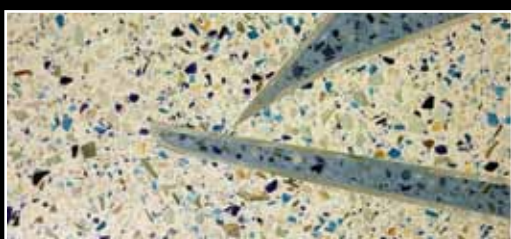
**Resin Supplier**  
**Key Resin Company**

**Aggregate Suppliers**  
**Arim, Inc.**  
**Heritage Glass**

**Precast Supplier**  
**Precast Terrazzo Enterprises**

**Divider Strip Supplier**  
**Manhattan American Terrazzo Strip Company**

**Photographer**  
**Leslie Carrio**





## Virginia Tech Signature Engineering Building, Goodwin Hall Blacksburg, VA

The sophisticated, energized floor pattern on this 28,500-square-foot project symbolizes electronic impulses. Lively yet contained, the design harmonizes with the space, taking its cue from the architecture. The contractor succeeded in producing consistently sharp corners on the unique, floating stairway, an extremely difficult challenge of the job. The three stairs, poured-in-place on a radius, flow into the monumental self-supported treads and post-poured stainless steel inserts. Terrazzo is built to withstand the high volume of foot traffic and vehicles moving industrial materials through the public circulation areas.

### Architect

Zimmer Gunsul Frasca Architects  
Washington, DC

### Terrazzo Contractor

David Allen Company  
Raleigh, NC

### General Contractor

Gilbane Building Company  
Laurel, MD

### Owner

Commonwealth of Virginia  
Blacksburg, VA

### Resin Supplier

Terrazzo & Marble Supply Companies

### Aggregate Supplier

Terrazzo & Marble Supply Companies

### Precast Supplier

Wausau Tile

### Divider Strip Supplier

National Metal Shapes

### Photographer

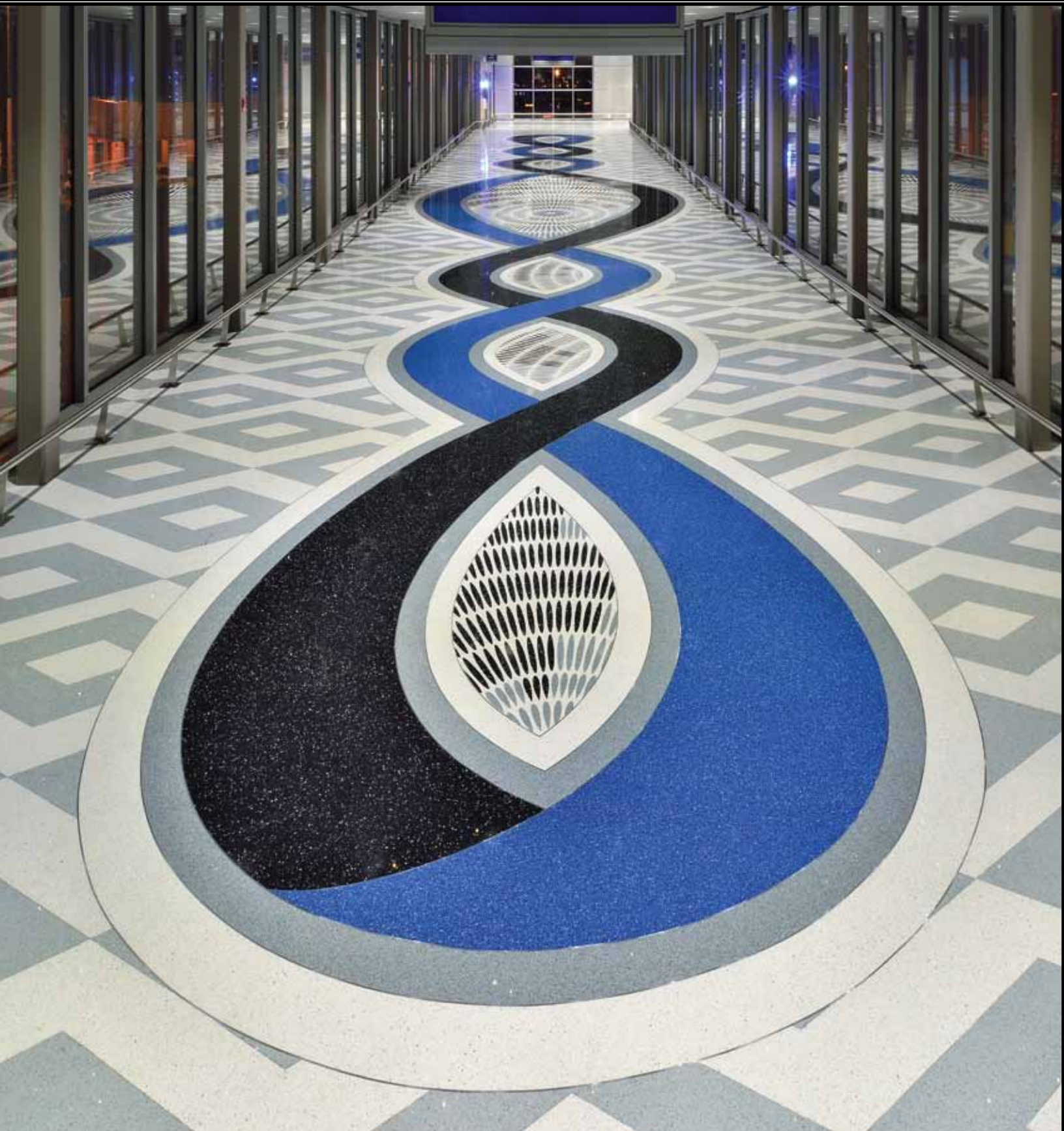
David Laudadio



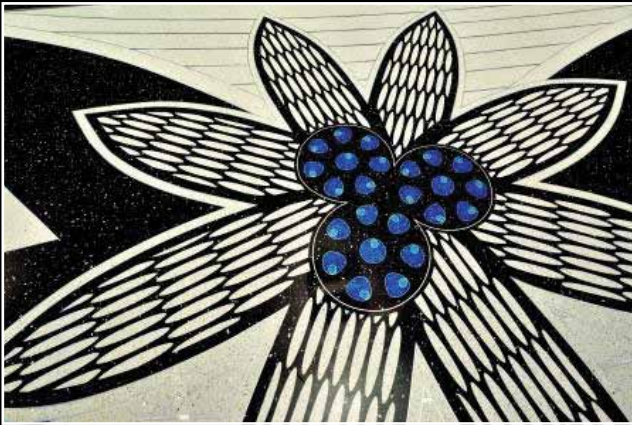


## 2015 Job of the Year

Phoenix Sky Harbor International Airport  
Phoenix Sky Train – Terminal 3 Stations  
Phoenix, AZ







This 24,000-square-foot commissioned public art project illustrates the design flexibility of terrazzo. The dynamic floor's seven intense colors, 3D effects and graceful interplay of shapes over patterns are among the project's many assets. In designs inspired by traditional Navajo pottery and weaving patterns, water-jet cutting replaced divider strips to separate colors. Over 5,000 torpedo shapes in five sizes were water-jet cut from precast terrazzo slabs and another 4,000 triangles cut from black granite and hand set. Precision was imperative in the project, especially in the diamond pattern, which required a higher number of linear feet of divider strip than square feet of terrazzo. The varied, abstract rings of the turquoise eyes of the flowers were hand-bent. With surrounding floor-to-ceiling glass, an epoxy mortar with a 1/8-inch in 10 feet tolerance was chosen to ensure a flat surface to clearly reflect light. While designed on a relatively small scale, the floor's clean, modern patterns keep pace within the huge concourse. This project is a feat of master craftsmanship and achievement of design intent.

#### **Architect**

**Gannett Fleming, Inc.**  
Phoenix, AZ

#### **Designer/Artist**

**Janelle L. Stanley**  
Phoenix, AZ

#### **Art Commission**

**The Phoenix Office of Arts and Culture**  
**Public Art Program**  
**Phoenix Aviation Department**

#### **Terrazzo Contractor**

**CORRADINI Corp.**  
Fountain Valley, CA

#### **General Contractor**

**McCarthy Kiewit JV**  
Phoenix, AZ

#### **Owner**

**City of Phoenix**

#### **Resin Supplier**

**Terrazzo & Marble Supply Companies**

#### **Aggregate Suppliers**

**Terrazzo & Marble Supply Companies**  
**Continental Terrazzo Supply**  
**EnviroGlas Products**

#### **Divider Strip Supplier**

**National Metal Shapes**

#### **Photographer**

**David Laudadio**



## Soo Line Building City Apartments Minneapolis, MN

This historic Renaissance Revival-style building was renovated as a mixed-use luxury apartment complex. Over 7,500-square-feet of 3/8-inch epoxy in three classic patterns complement the contemporary space while meeting the challenge of maintaining the original integrity of the structure. The three-story lobby was restored to its original 1914 splendor with a floating white precast terrazzo staircase anchoring the space. Approximately 3,000 linear feet of 1/8-inch straight divider strip and over 1,700 linear feet of radius divider strip were installed, all custom mitered. Over 35,000 pounds of marble aggregate was integrated into the multiple monochromatic designs.

**Architect**  
BKV Group  
Minneapolis, MN

**Terrazzo Contractor**  
Grazzini Brothers & Company  
Eagan, MN

**General Contractor**  
Frana Companies  
Hopkins, MN

**Owner**  
Village Green Companies  
Chicago, IL

**Resin Supplier**  
Terrazzo & Marble Supply Companies

**Aggregate Supplier**  
Terrazzo & Marble Supply Companies

**Precast Supplier**  
Wausau Tile

**Divider Strip Supplier**  
National Metal Shapes

**Photographer**  
David Markely







## Dorman High School Early College and Career Center Roebuck, SC

A dramatic overlapping circular pattern in nine colors in the spacious lobby of this 16,000-square-foot installation of epoxy thin-set strikes a colorful contrast to the warm brick and wood surfaces. Functional, flexible educational spaces, accented by handsome school logos, include a 1,500-seat auditorium. Contributing to the success of this impressive project are the sense of motion in the design and the logic of the variations in the pattern. The scale of the design complements the space and structure, nicely accentuating the curves of the monumental stair and balcony. The stairs are self-supporting precast treads, with a matching poured-in-place landing.

**Architect**  
McMillan Pazdan Smith  
Spartanburg, SC

**Terrazzo Contractor**  
David Allen Company  
Raleigh, NC

**General Contractor**  
McKnight Construction Company  
Roebuck, SC

**Owner**  
Spartanburg County School #6  
Roebuck, SC

**Resin Supplier**  
Terrazzo & Marble Supply Companies

**Aggregate Suppliers**  
Arim, Inc.  
Southern Aggregates/Justice Products  
Terrazzo & Marble Supply Companies

**Precast Supplier**  
Wausau Tile

**Divider Strip Supplier**  
National Metal Shapes

**Photographer**  
David Laudadio



# University of Michigan Biomedical Sciences Research Building Ann Arbor, MI

An eye-catching linear terrazzo pattern in the lobby and atrium distinguishes this 20,000-square-foot project. In an interplay of four colors, stripes within stripes are superimposed on a large stripe of another angle and interspersed with random, abstract cloud forms, creating a sense of space and spaciousness. Epoxy mortar was chosen for the underlayment to correct an irregular substrate depth that varied from 1/16 inch to two inches. Precast terrazzo treads and risers with exposed stringers connect the upper and lower floors while poured-in-place tread and risers flow seamlessly into the floor and wall panels that separate the upper and lower lobby.

## Architect

Ennead Architects  
New York, NY

## Terrazzo Contractor

Michielutti Bros., Inc.  
Eastpointe, MI

## General Contractor

Gilbane/Clark Joint Venture  
Ann Arbor, MI

## Owner

University of Michigan  
Ann Arbor, MI

## Resin Supplier

Terrazzo & Marble Supply Companies

## Aggregate Supplier

Terrazzo & Marble Supply Companies

## Precast Supplier

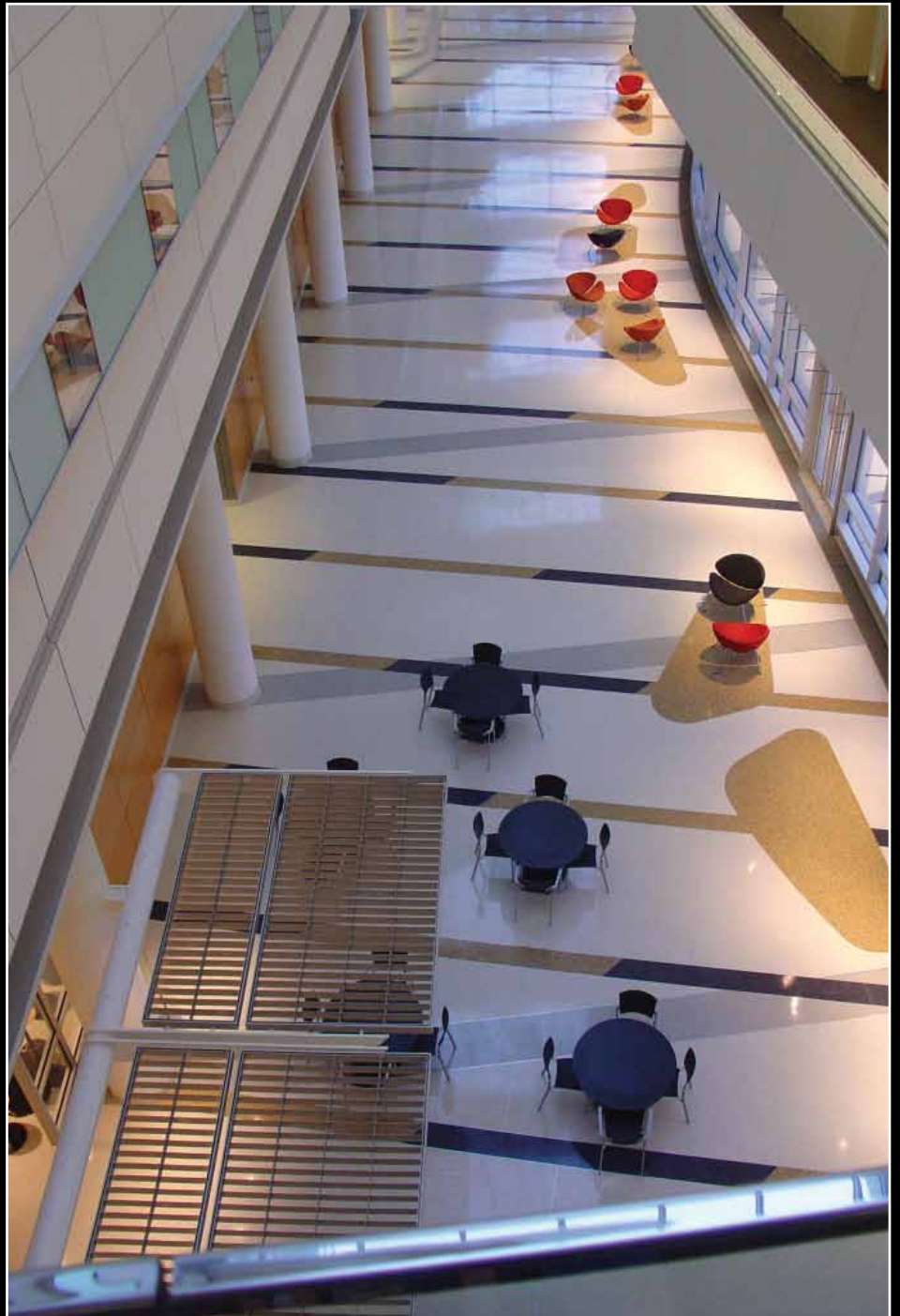
Angelozzi Precast Terrazzo Products

## Divider Strip Supplier

National Metal Shapes

## Photographer

Robert Michielutti, Jr.







## Northwestern Memorial Hospital - Outpatient Care Pavilion Chicago, IL

Natural light from high windows illuminates the beauty of the 25,000-square-foot of 1500-grit-polished terrazzo. The intuitive path of travel indicated by the floor pattern leads visitors through the space. The elegant integration of long rectangular panels in five colors and zinc radius strips, from 1/8-inch to one-inch thick, unifies the organized geometry and fluid curves of the architecture from floor to ceiling. The subtle, neutral colors and the sophisticated, appropriately restrained design supports and echoes the architecture beautifully.

**Architect**  
Cannon Design  
Chicago, IL

**Designer/Artist**  
Kimberly Cook  
Chicago, IL

**Terrazzo Contractor**  
Menconi Terrazzo  
Bensenville, IL

**General Contractor**  
Lend Lease (US) Construction  
Chicago, IL

**Owner**  
Northwestern Memorial Hospital  
Chicago, IL

**Resin Supplier**  
Terrazzo & Marble Supply Companies

**Aggregate Supplier**  
Terrazzo & Marble Supply Companies

**Divider Strip Supplier**  
Manhattan American Terrazzo Strip  
Company

**Photographer**  
Mike Fetro





# Nemours - Alfred I. DuPont Hospital for Children Wilmington, DE

This children's hospital expansion centers on a spectacular lobby and open, five-story atrium. The focal point of the 42,000-square-foot terrazzo floor is the cheerful sunburst with its rays; a geometric spiral of simple shapes and seven bright colors. Eye-directing patterns and colors guide the flow of movement within the neutral palette of the atrium. Multiple arcs flow smoothly from one end of the space to the other, taking into account walls and other obstacles. The sunburst is designed to define an area as a stage for live performances that patients on all floors can see from their care unit.

**Architect**  
FKP Architects  
Houston, TX

**Terrazzo Contractor**  
Roman Mosaic & Tile Company  
West Chester, PA

**General Contractor**  
SKANSKA USA Building  
Tampa, FL

**Owner**  
Nemours Foundation  
Jacksonville, FL

**Resin Supplier**  
Terrazzo & Marble Supply Companies

**Aggregate Suppliers**  
Arim, Inc.  
Terrazzo & Marble Supply Companies

**Divider Strip Supplier**  
Manhattan American Terrazzo Strip  
Company

**Photographer**  
Brycen Fischer







## The Vermont Los Angeles, CA

Installed in an upper floor lobby of a luxury residential high rise, this 18,000-square-foot epoxy thin-set application makes an impact with its combination of five rich, vibrant colors. Marble, glass and mirror aggregate lend sophisticated, tasteful sparkle and depth to the colors. The energizing space is marked by a restrained, balanced blend of linear elements mixed with curved and circular shapes. The floor design complements the space by reflecting ceiling soffits and light fixtures. The color bands and divider strips add a subtle unity and continuous flow while purposefully defining seating areas and flow of traffic.

### Architect

**Harley Ellis Deveaux**  
Los Angeles, CA

### Terrazzo Contractor

**CORRADINI Corp.**  
Fountain Valley, CA

### General Contractor

**J.h Snyder Co**  
Los Angeles, CA

### Owner

**3150 Wilshire, LLC**  
Los Angeles, CA

### Resin Supplier

**Terrazzo & Marble Supply Companies**

### Aggregate Supplier

**Terrazzo & Marble Supply Companies**

### Divider Strip Supplier

**National Metal Shapes**

### Photographer

**David Laudadio**



## Vitae Restaurant New York, NY

The simplicity and elegance of this unique 1,500-square-foot installation of functional art speaks for itself. The use of micro-quartzite as aggregate reinforces the design and keeps the eye focused on the original chain-link pattern, staid but dynamic, contemporary yet classic in its choice of colors. Water-jet technology was used to form the black elements of the interwoven geometrical shapes, while the white sections were poured-in-place. Water-jet technology allows for the creation of a monolithic floor with highly intricate patterns without expansion joints or metal strips for separating colors.

**Architect**  
Mr. Neils Guldager  
New York, NY

**Terrazzo Contractor**  
Durite Concepts Inc.  
Great Neck, NY

**Owner**  
Vitae Restaurant  
New York, NY

**Resin Supplier**  
Terrazzo & Marble Supply Companies

**Photographer**  
David Laudadio

