



2014 Honor Awards

Terrazzo



2014 HONOR AWARDS TABLE OF CONTENTS

Minneapolis - St. Paul International Airport	1
St. Luke's Hospital.....	2
New United States Courthouse San Diego	3
Adventist Health Campus	4
Cleveland Hopkins Airport	5
Wake County Justice Center	6
University of Michigan Crisler Center	7
Job of the Year	8-9
Federal Reserve Bank of Chicago	10
Christopher Newport University Luter School of Business	11
San Diego International Airport.....	12
Saint Joseph's Roman Catholic Church.....	13
Kelsey - Seybold Hospital Clinic	14
Kalama River Office Building	15
Center in the Square.....	16

Minneapolis - St. Paul International
Airport Humphrey Terminal 2
Minneapolis, MN

An unusually complex job, this 27,000 square foot epoxy terrazzo floor is a publicly funded art project that demonstrates the potential of terrazzo as an artistic medium. The abstract “Starwheel” design represents the Minnesota landscape within a theme of migration. Its images refer to constellations and the region’s grass prairies and rock engravings. Silver coated mirror and mother-of-pearl aggregates evoke the reflection of stars on the surface of local rivers and lakes. Way-finding markers are layered into the design, with an image of an astrolab set to the airport’s location. The 16-color epoxy terrazzo floor was designed, sampled and completed in just 60 days.

Architect

Miller Dunwiddie Architecture
Minneapolis, MN

Designer/Artist

Scott Parsons
Larchwood, IA

Terrazzo Contractor

Grazzini Brothers & Company
St. Paul, MN

General Contractor

Morcon Construction
Golden Valley, MN

Owner

Metropolitan Airport Commission (MAC)
Minneapolis, MN

Resin Suppliers

Key Resin Company
Terrazzo & Marble Supply Companies

Aggregate Supplier

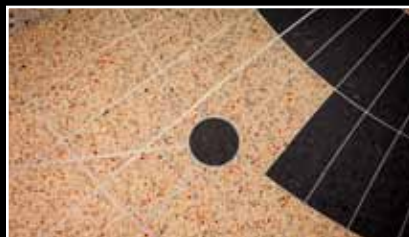
Terrazzo & Marble Supply Companies

Strip Design Fabricator

National Metal Shapes

Photographer

David Markley



St. Luke's Hospital Kansas City, MO

A clean, classic palette of neutral colors contributes to the simple elegance of this design, gracefully integrating glass entries, sweeping staircases and modern artwork. The terrazzo responds perfectly to the architecture in this well executed, cohesive design. Two grand staircases anchor each end of the terrazzo installation, the first a conical spiral, wrapping around glass artwork. Each step was poured in place following the installation of glass tile risers. The second, a floating staircase consists of poured terrazzo landings and self-supporting precast treads. The staircases are connected by 33,000 square feet of epoxy terrazzo.

Architect

ACI/Boland
Kansas City, MO

Terrazzo Contractor

DESCO Coatings
Olathe, KS

General Contractor

J.E. Dunn Construction Company
Kansas City, MO

Owner

St. Luke's Hospital
Kansas City, MO

Resin Supplier

Terrazzo & Marble Supply Companies

Precast Products Supplier

Precast Terrazzo Enterprises

Photographers

Sacred Earth Gallery, Edward C. Robinson III
DESCO Coatings, Cindy Crouch



New United States Courthouse San Diego, CA

The timeless, simple elegance of this two-color terrazzo design sets the stage for breathtaking views of the downtown skyline and the bay, visible through floor-to-ceiling windows. Impressive in scope and execution, this federal courthouse installation boasts 80,000 square feet of traditional, sand cushion cement terrazzo in the public areas, including elevator lobbies, hallways, and restrooms of the 17-story structure, all with poured-in-place base. In addition, over 10,000 square feet of epoxy terrazzo was used in the facility's detention areas, for ease of maintenance.

Architect

Richard Meier & Partners Architects LLP
Los Angeles, CA

Terrazzo Contractor

CORRADINI Corp.
Fountain Valley, CA

General Contractor

Hensel Phelps Construction Company
Irvine, CA

Owner

U.S. General Services Administration
San Francisco, CA

Cement Supplier

United Terrazzo Supply Company

Resin Supplier

Sherwin Williams/General Polymers

Aggregate Supplier

Continental Terrazzo Supply

Divider Strip Supplier

Manhattan American Terrazzo Strip Company

Photographer

Lauren Corradini



Adventist Health Campus Castle Rock, CO

Distinguished by unique design elements, this four-story hospital showcases an interweaving terrazzo pattern, in eight earth-tone colors, that guides traffic through corridors and lobbies. The architectural design integrates a total of 12,000 square feet of epoxy terrazzo alongside native stone and wood and more modern elements of metal and glass to create a healing environment. Intermittent banding of broad metal bar stock embedded in the terrazzo pattern throughout the lobby are echoed in other flooring materials while circular accents help to visually define desk, seating, and serving areas.

Architect

Hunton Brady
Orlando, FL

Designer/Artist

Aurelio Posada
Orlando, FL

Terrazzo Contractor

Colorado Design Inc. Tile & Terrazzo
Denver, CO

General Contractor

G E Johnson
Colorado Springs, CO

Owner

Castle Rock Adventist Health Campus
Castle Rock, CO

Resin Supplier

Terrazzo & Marble Supply Companies

Aggregate Supplier

Terrazzo & Marble Supply Companies

Precast Products Supplier

Wausau Tile

Divider Strip Supplier

Manhattan American Terrazzo Strip Company

Photographer

Studio Q Photography LLC, Mark Quentin





Cleveland Hopkins Airport Cleveland, OH

The designs of seven Northeast Ohio artists, including a group of high school students, and a TSA officer, have transformed Hopkins Airport in Cleveland, Ohio, into a permanent art gallery. In this renovation project, 100,000 square feet of carpet was replaced with epoxy terrazzo for durability and ease of maintenance. The installation brought in 70,000 square feet of a single color terrazzo, and 30,000 square feet of vibrantly colorful artwork.

Architect

Westlake, Reed, Leskosky
Cleveland, OH

Designer/Artist

Seven Northeast Ohio Artists

Terrazzo Contractor

O.A. Bertin Company
Cleveland, OH

General Contractor

Kokosing Construction Company
Fredericktown, OH

Owner

Cleveland Port Authority
Cleveland, OH

Resin Supplier

Terrazzo & Marble Supply Companies

Aggregate Supplier

Terrazzo & Marble Supply Companies

Divider Strip Supplier

National Metal Shapes

Photographer

Anita Bertin DeGreen



Wake County Justice Center Raleigh, NC

Versatile, durable and design flexible, terrazzo was specified for 90,000 square feet in the common areas of this public building. The floor design recalls the inlaid patterns and marquetry of the art deco style of the city's historic structures. In a style neither purely traditional nor purely modern, multicolor chevrons, ribs and banding patterns unify the design elements and define spaces throughout the zones and levels of the building. Marble aggregates complement the wood and stone wall panels, with glass, porcelain and mother-of-pearl added for depth and sparkle. The focal point in the lobby is a monumental staircase with three landings and outstandingly clean lines.

Architects

O'Brian/Atkins Associates
Research Triangle Park, NC

HOK Architects
Washington, DC

Terrazzo Contractor

David Allen Company
Raleigh, NC

General Contractor

Barnhill/Balfour Beatty, Joint Venture
Raleigh, NC

Owner

Wake County
Raleigh, NC

Resin Supplier

Master Terrazzo Technologies

Aggregate Suppliers

Continental Terrazzo Supply
Southern Aggregates (Justice Products)
Terrazzo & Marble Supply Companies

Precast Products Supplier

Precast Terrazzo Enterprises

Divider Strip Supplier

National Metal Shapes

Photographer

Master Terrazzo Technologies, Jim Guy





University of Michigan Crisler Center Ann Arbor, MI

The latest renovation of this university basketball stadium is both a tribute to sustainability, earning a LEED Gold certification, and a testimony to teamwork. In just three months, over 50,600 square feet of epoxy terrazzo in five colors were installed, just in time for the basketball season. A simple, clearly stated theme of stitching on a basketball and appealing colors are a winning combination. The orderly terrazzo design stays true blue throughout, with logos, lettering, and university seals. The 30 lines of the university fight song are embedded in the terrazzo utilizing water-jet solid zinc letters.

Architect

TMP Architecture
Bloomfield Hills, MI

Terrazzo Contractor

Michielutti Bros., Inc.
Eastpointe, MI

General Contractor

Spence Brothers
Ann Arbor, MI

Owner

Regents of the University of Michigan
Ann Arbor, MI

Resin Supplier

Terrazzo and Marble Supply Companies

Aggregate Suppliers

Continental Terrazzo Supply
Terrazzo & Marble Supply Companies

Divider Strip Supplier

National Metal Shapes

Photographer

Canright Communications



2014 Job of the Year

Los Angeles International Airport Bradley West Concourse & Core Los Angeles, CA

The artistry and functionality of terrazzo won it a star role in this large scale drama. The terminal expansion in one of world's biggest and busiest airports centers on an installation of over 550,000 square feet of epoxy terrazzo in 11 colors on six levels. This installation demonstrates the craftsmanship and skill of the terrazzo contractor, while the simple design perfectly addresses the grand scale of the space. An unusual feature of the project is the poured-in-place, hand-ground terrazzo that wraps up the high walls and onto the ceilings at each of the 14 gate portals, a total of 11,000 square feet. The whimsical patterns in the floor create a path for traffic flow and a delineation of spaces, while allowing other colors in the design to take center stage. Soothing neutral colors and the harmony of the various elements of the project as a whole set off terrazzo to its best advantage in this project.

Architect

Fentress Architects
Denver, CO

Terrazzo Contractor

CORRADINI Corp.
Fountain Valley, CA

General Contractor

Walsh Austin, Joint Venture
Los Angeles, CA

Owner

City of Los Angeles/Department of Airports
Los Angeles, CA

Resin Supplier

Terrazzo & Marble Supply Companies

Aggregate Suppliers

Terrazzo & Marble Supply Companies
Continental Terrazzo Supply
United Terrazzo Supply Company
EnviroGlas Products

Precast Products Supplier

Wausau Tile

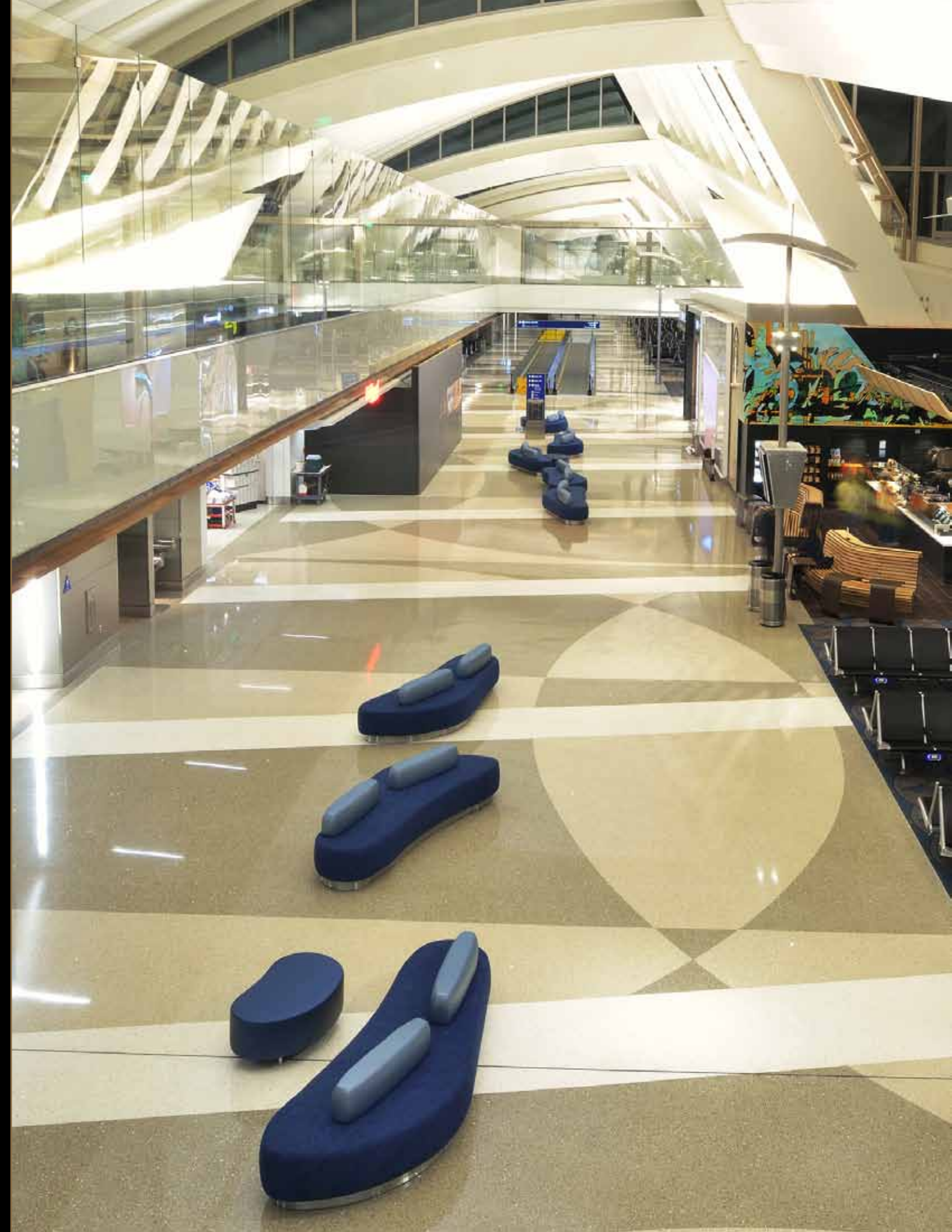
Divider Strip Supplier

National Metal Shapes

Photographer

David Laudadio





Federal Reserve Bank of Chicago Detroit, MI

An innovative use of materials distinguishes this 7,500 square foot terrazzo installation. Originally built in 1927, the drab 176,000 square foot structure had been vacant since 2004. The new terrazzo floors in seven elevator lobbies incorporate a unique Zen-style combination of natural river rock visible through clear resin. In the mezzanine and main levels, that basic blend unifies the design while it varies to incorporate orbital marble tile, metal shavings, and two different sizes of metal discs, reminiscent of coins.

Architect

ROSSETTI
Detroit, MI

Terrazzo Contractor

Artisan Tile
Brighton, MI

General Contractor

Sachse Construction
Detroit, MI

Owner

Bedrock Real Estate Services
Detroit, MI

Resin Supplier

Terrazzo & Marble Supply Companies

Aggregate Supplier

Terrazzo & Marble Supply Companies

Precast Products Supplier

Wausau Tile

Divider Strip Supplier

National Metal Shapes

Photographer

Octane Photography Studio, Jeff White





Christopher Newport University Luter School of Business, Newport News, VA

The orderly geometric design in this grand entrance is beautifully appropriate for the space and architecture. Over 100 hulen green marble tiles are embedded in the intricate, timeless pattern of the terrazzo floor. Each octagon was field-fabricated with hand-bent and carefully mitered aluminum strips, using only whole or half marble tiles, without control joints within the pattern. Four subtle terrazzo colors, a total of 4,600 square feet, accent the tiles with a combination of marble, mother-of-pearl and mirror chips. Terrazzo offers an environmentally friendly and extremely durable choice for academic settings.

Architect

Glave' & Holmes Architecture
Richmond, VA

Terrazzo Contractor

Pompei, Inc.
Newport News, VA

General Contractor

Whiting-Turner Contracting Company
Richmond, VA

Owner

Commonwealth of Virginia

Resin Supplier

Terrazzo & Marble Supply Companies

Aggregate Supplier

Terrazzo & Marble Supply Companies

Precast Products Supplier

Wausau Tile

Divider Strip Supplier

National Metal Shapes

Photographer

Dave Chance Photography



San Diego International Airport San Diego, CA

Old-school workmanship, hand-seeding of aggregate, and design detailing characterize this 11 color, 215,000 square foot epoxy terrazzo installation. Poured with a minimal use of divider strips, the freeform design was inspired by the tide pools and boardwalks of San Diego's Point Loma Beach and represents the movement of the surf and sea foam on water and black sand. Water jet-cut metal-work around the life-size artificial trees and the innovative use of jelly bean-glass aggregates add further notes of interest to the installation.

Architect

HNTB
Los Angeles, CA

Terrazzo Contractor

T.B. Penick & Sons
San Diego, CA

General Contractor

Turner/PCL/Flatiron
San Diego, CA

Owner

San Diego County Regional Authority
San Diego, CA

Resin Supplier

Terrazzo & Marble Supply Companies

Aggregate Suppliers

Arim Terrazzo Supply
Cactus Canyon Quarries
Heritage Glass
Terrazzo & Marble Supply Companies
United Terrazzo Supply Company

Precast Products Supplier

Wausau Tile

Divider Strip Suppliers

National Metal Shapes
Terrazzo & Marble Supply Companies

Photographer

David Laudadio



Saint Joseph's Roman Catholic Church Downingtown, PA

The spectacular worship space of this new 1,200-seat sanctuary is complemented by 17,400 square feet of four-color epoxy terrazzo. Natural light illuminates the simple, clean design of the seamless floor. Rich, deep, classic colors were chosen to reinforce the architecture and harmonize with the marble, woodwork, and stained glass. A multicolor octagon showcases the baptismal font. The focal point of the project is a quatrefoil-shape medallion in nine colors with lilies and a carpenter's square, symbolic of the church's patron saint.

Architect

Casaccio Architects
Havertown, PA

Terrazzo Contractor

Roman Mosaic and Tile Company
West Chester, PA

General Contractor

Caldwell, Heckles & Egan, Inc.
Lancaster, PA

Owner

Archdiocese of Philadelphia
Philadelphia, PA

Resin Supplier

Terrazzo & Marble Supply Companies

Aggregate Suppliers

Arim Terrazzo Supply
Terrazzo & Marble Supply Companies

Precast Products Supplier

Romoco Precast Terrazzo Products

Divider Strip Supplier

Manhattan American Terrazzo Strip Company

Photographer

PPSI, Brycen Fischer



Kelsey - Seybold Hospital Clinic Pasadena, TX

Exceptionally clean, rich contrasting colors in warm, soothing earth tones stand out in this well executed and meticulous design. Chosen for its durability and ease of maintenance, terrazzo leads the way in an elegant theme that responds perfectly to the structure's architecture. The fully glassed, luminous rotunda of the main entry is marked by a series of circles, with a glass and mother-of-pearl aggregate mix that reflect light. A beautifully finished circular stairway of poured-in-place terrazzo treads, risers and stringers follow the curve of the rotunda.

Architect

Kirksey
Houston, TX

Terrazzo Contractor

Southern Tile & Terrazzo Company
Houston, TX

General Contractor

Gamma Construction Company
Houston, TX

Owner

Health Care REIT
Toledo, OH

Resin Supplier

Terrazzo & Marble Supply Companies

Aggregate Suppliers

EnviroGlas Products
Fribel International

Divider Strip Supplier

Manhattan American Terrazzo Strip Company

Photographer

Mark Dean Photography



Kalama River Office Building Fountain Valley, CA

Terrazzo is the clear center of interest in this office remodel. Its clean, crisp design combines ten colors in a pattern of twisting ribbon that defines the open, modern style. The bands of color unify the space, flowing continuously through each room in the building. Circles of various sizes in terrazzo, and water jet-cut aluminum perfectly accent the ribbons. Subtle variations of color in the folds of the ribbons are achieved by adjustments in the aggregate mix of marble and glass. Desk tops in terrazzo, over 16 feet in length, were created with precast terrazzo slabs, precisely joined to create seamless, monumental sections.

Architect

Calvin L. Smith & Associates
Laguna Beach, CA

Terrazzo Contractor

CORRADINI Corp.
Fountain Valley, CA

General Contractor

Monaghan Construction Company
Carlsbad, CA

Owner

Ronald Corradini
Newport Beach, CA

Resin Supplier

Terrazzo & Marble Supply Companies

Aggregate Supplier

Terrazzo & Marble Supply Companies

Divider Strip Supplier

National Metal Shapes

Photographer

David Laudadio



Center in the Square Roanoke, VA

Terrazzo offered historically appropriate flooring material with low VOC emission and low life cycle costs for this 158,000 square foot, 100-year-old structure. Terrazzo was manipulated like oils on a large canvas to produce an artistic rendering with over 70 colors and 30 different aggregates. Floor murals blend abstraction, realism, and varied perspectives, depicting a butterfly with a 66-foot wing perched on an iris, a railroad wheel, a series of stars, a bouquet of daisies, and a pair of comedy and tragedy masks. Nine shades of yellow with three different aggregates, hand-blended onsite, show a microscopic view of a butterfly wing.

Architect

Spectrum Design, PC
Roanoke, VA

Designer/Artist

Spectrum Design by Lenore Ervin & David Bandy
Roanoke, VA

Terrazzo Contractor

David Allen Company
Raleigh, NC

General Contractor

Thor Inc.
Roanoke, VA

Owner

Center in the Square
Roanoke, VA

Resin Supplier

Terrazzo & Marble Supply Companies

Aggregate Supplier

Terrazzo & Marble Supply Companies

Divider Strip Supplier

National Metal Shapes

Photographer

David Laudadio





PO Box 2605
Fredericksburg, TX 78624
800.323.9736
www.NTMA.com